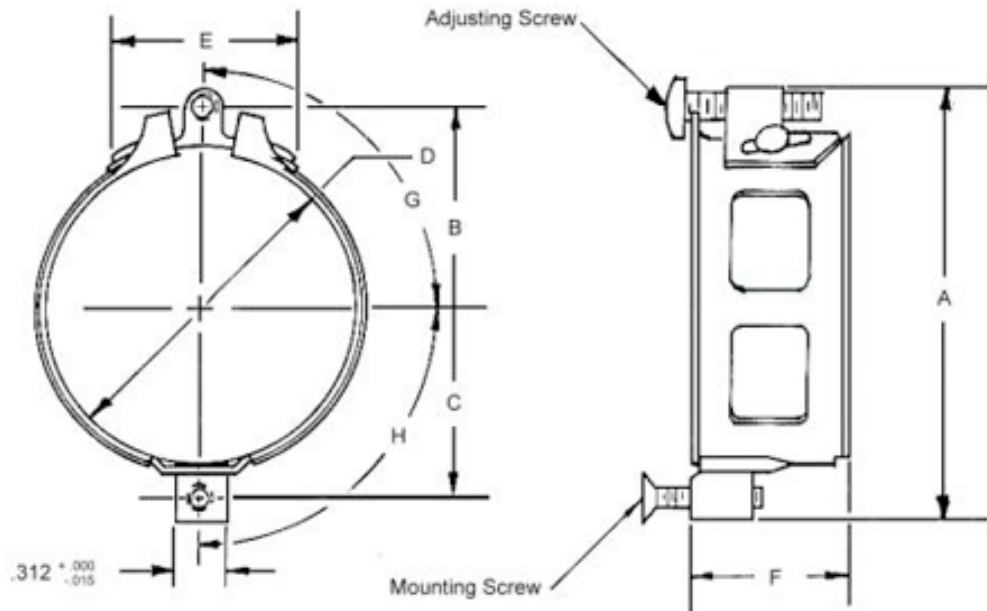


# CLAMP CATALOG



# Round Clamps

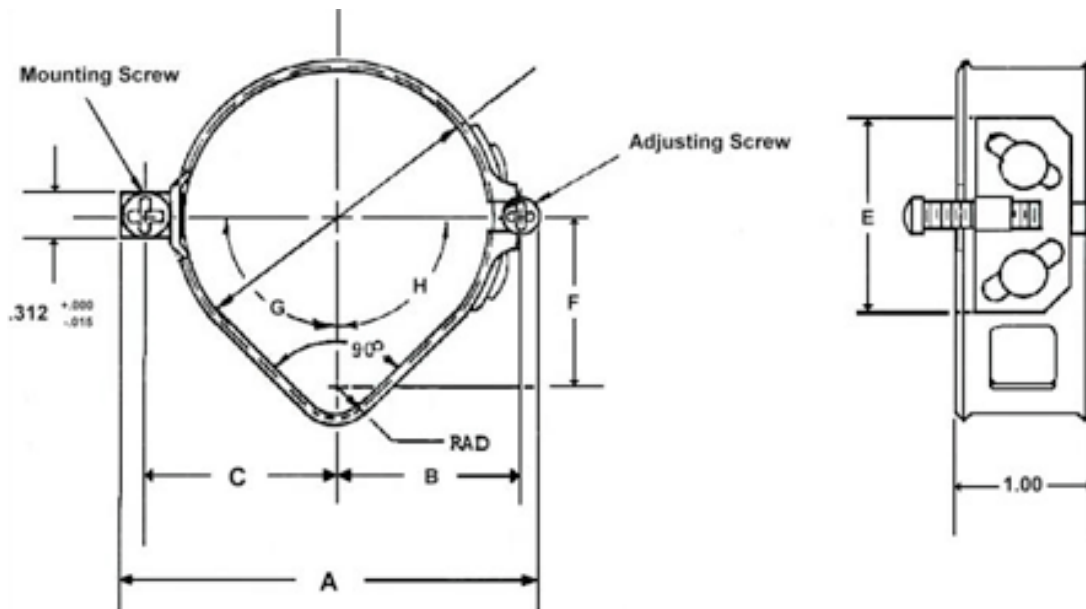


MSP Inc. P/N	OTHER P/N	A	B	C	D	D	E	F	G	H	MOUNTING SCREW	ADJUSTING SCREW
		MAX. ±.005	±.005	±.005	MAX.	MIN.	MAX.	±.03	±1°	±1°		
64244	7443482-501	2.750	1.250	1.203	1.968	1.890	0.875	1.00	90	90	MS24693BB52	5801-7
64246	C810B4	3.035	1.422	1.313	2.296	2.218	1.125	1.00	90	90	MS24593BB52	5801-7
64248	7443482-525	1.631	0.665	0.665	1.040	0.960	0.625	1.00	90	58	AN507B632R12	AN515B6R12
64294		1.755	0.769	0.769	1.152	1.107	1.100	0.50	90	90	MS24693BB30	AN515B6R12
64307		2.281	1.000	1.000	1.548	1.452	0.750	1.00	90	90	MS24693BB30	MS35214-31
64330	LS10212A3	2.047	0.915	0.915	1.555	1.445	0.750	1.00	90	90	NAS5701U12	NAS5401U12
64331	LS10212A4	1.626	0.696	0.696	1.055	0.975	0.625	1.00	90	90	NAS5701U12	NAS5401U12
64354	7443482-529	1.631	0.665	0.665	1.040	0.960	0.625	1.00	90	58	AN507B632R28	AN515B6R28
64379	41C300-1	2.750	1.250	1.203	1.968	1.890	0.875	1.00	90	90	51B507C08-12B	51B600C3-14B
64380	41C300-5A	1.563	0.665	0.665	1.040	0.960	0.625	1.00	90	90	51B507C06-12B	51B507C06-12B
64386		1.850	0.800	0.800	1.290	1.210	0.750	1.00	90	90	MS24693BB30	AN515B6R12
64388	BELL 30-058-1	2.750	1.250	1.203	1.968	1.890	0.875	1.00	90	90	MS24693BB52	MS35215-58
64389	BELL 30-058-3	3.812	1.750	1.750	3.172	3.078	1.125	1.00	90	90	MS24693BB52	5801-7
64390		3.125	1.408	1.361	2.305	2.235	1.200	1.00	90	90	MS24693BB52	MS35215-58

64395		1.563	0.665	0.665	1.020	0.980	0.625	0.38	90	90	MS24693BB30	AN515B6R12
64396		3.320	1.535	1.488	2.538	2.462	1.200	1.00	90	90	MS24693BB52	MS35215-58
64415		1.980	0.831	0.835	1.281	1.236	1.125	0.50	90	90	MS24693BB52	AN520B10R12
64443		1.953	0.812	0.813	1.237	1.197	1.100	0.50	90	90	MS24693BB52	AN520B10R12
64445		2.750	1.250	1.203	1.968	1.890	0.875	1.00	90	90	MS24693BB54	5801-9
64451		2.750	1.250	1.203	1.968	1.890	0.875	1.00	90	90	MS24693BB52	5801-7
64452		2.688	1.250	1.203	1.968	1.890	0.875	1.00	107	90	MS24693BB54	5801-9
64453		3.800	1.750	1.750	3.172	3.078	1.125	1.00	120	90	MS24693BB54	5801-9
64471	NOTE 9	1.563	0.665	0.665	1.040	0.960	0.625	1.00	90	90	MS24693C30	AN515C6R12
64472	NOTE 9	2.047	0.915	0.915	1.540	1.460	0.750	1.00	90	90	MS24693C30	MS35216-29
64473	NOTE 9	2.750	1.250	1.203	1.968	1.890	0.875	1.00	90	90	MS24693C276	MS35217-60
64475	BELL 30-058-5	2.047	0.915	0.915	1.540	1.460	0.750	1.00	90	90	MS24693BB30	MS35214-29
64486	NOTE 9	1.563	0.665	0.665	1.040	0.960	0.625	1.00	90	90	MS24693C30	MS24693C30
64496		2.688	1.250	1.203	1.968	1.890	0.875	1.00	69.5	90	MS24693BB54	5801-9
64525	C810-1	1.563	0.665	0.665	1.040	0.960	1.046	1.00	90	90	AN507PB632R12	AN520BP6R12
64526	C810B1	1.563	0.665	0.665	1.040	0.960	1.046	1.00	90	90	MS24693BB30	AN520BP6R12
64527	C810-2	2.047	0.915	0.915	1.540	1.460	1.150	1.00	90	90	AN507PB632R12	AN520PB6R12
64528	C810-3	2.750	1.250	1.203	1.968	1.890	1.202	1.00	90	90	AN507PB832R12	64528-7
64530		1.788	0.770	0.768	1.255	1.145	1.060	1.00	90	90	MS24693C30	MS35216-29
64540		1.563	0.665	0.665	1.040	0.960	0.625	1.00	90	90	MS24693BB30	AN515B6R12
64541		3.225	1.502	1.422	2.440	2.360	1.125	1.00	90	90	MS24693BB52	MS35215-58
64573		1.720	0.727	0.727	1.220	1.150	0.688	1.00	90	90	MS24693BB30	MS235214-29
64584		1.563	0.665	0.665	1.040	0.960	0.625	1.00	90	90	NAS1102E06-12	NAS1102E06-12
64585		1.563	0.665	0.665	1.040	0.960	0.625	1.00	90	90		
64588		3.035	1.422	1.313	2.296	2.218	1.125	1.00	90	90	MS24693BB52	AN507B1032R12
64590												
64598		2.750	1.250	1.203	1.968	1.890	0.875	1.00	90	90	MS24693BB52	MS35215-60
64613		2.750	1.250	1.203	1.968	1.890	0.874	1.00	90	90	MS24693BB52	MS35215-58
64614		3.812	1.750	1.750	3.172	3.078	1.125	1.00	90	90	MS24693BB52	5801-7
64645		2.297	1.040	1.040	1.775	1.710	0.750	1.00	90	90	MS24693BB30	MS35214-29
640002	BACC10EL2	2.047	0.915	0.915	1.540	1.460	0.750	1.00	90	90	MS24693BB30	MS35214-31

640003	BACC10EL3	2.750	1.250	1.203	1.968	1.890	0.875	1.00	90	90	MS24693BB53	MS35215-58
640004	BACC10EL4	3.812	1.750	1.750	3.172	3.078	1.125	1.00	90	90	MS24693BB52	5801-7
640005	BACC10EL1A	1.563	0.665	0.665	1.040	0.960	0.625	1.00	90	90	MS24693BB30	640005-7
5801-A-1		2.750	1.250	1.203	1.968	1.890	0.875	1.00	90	90	MS24693BB52	5801-7
64553-101		1.746	0.727	0.727	1.150	1.000	0.750	1.00	90	149	MS24693BB30	MS35215-29
64553-103		1.746	0.727	0.727	1.150	1.000	0.750	1.00	90	149	MS24693BB38	MS35215-30
64553-105		1.746	0.727	0.727	1.150	1.000	0.750	1.00	90	149	MS24693BB30	MS35214-29
MS28042-1A	5801-A	2.750	1.250	1.203	1.968	1.890	0.875	1.00	90	90	MS24693BB52	MS35215-58
MS28042-2A	6201-2	3.812	1.750	1.750	3.172	3.078	1.125	1.00	90	90	MS24693BB52	5801-7
MS28042-3A	6202-3	2.047	0.915	0.915	1.540	1.460	0.750	1.00	90	90	MS24693BB30	MS35214-29
MS28042-4A	6200-4	1.563	0.665	0.665	1.040	0.960	0.625	1.00	90	90	MS24693BB30	AN515B6R12

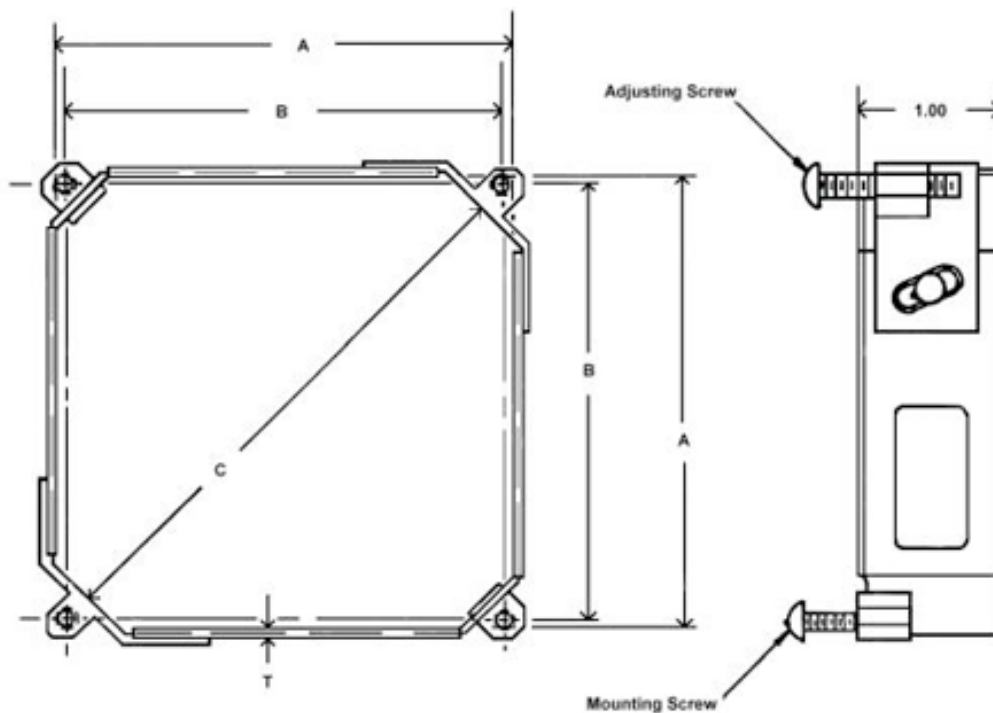
## Round Clamps with Knob Provisions



SP Inc.	OTHER	A	B	C	D	D	E	RAD	F	G	H	MOUNTING	ADJUSTING
P/N	P/N	MAX. ±.005	±.005	±.005	MAX.	MIN.	MAX. ±.010	±.010	±1	±1		SCREW	SCREW
64249	7443482-505	2.755	1.250	1.203	1.968	1.890	0.875	0.219	1.057	90	90	MS24693BB52	5801-7
64250	7443482-507	3.812	1.750	1.750	3.172	3.078	1.250	0.219	1.901	90	90	MS24693BB52	5801-7
64251	7443482-513	3.035	1.421	1.313	2.296	2.218	1.125	0.219	1.288	90	90	MS24693BB54	5801-9
64305		2.755	1.250	1.203	1.968	1.890	0.875	0.219	1.057	90	90	MS24693BB52	5801-7

64312	7443482-519	3.812	1.845	1.750	3.172	3.078	1.250	0.219	1.901	90	90	MS24693BB52	5801-7
64356		3.030	1.421	1.313	2.296	2.218	1.125	0.219	1.288	75	90	MS24693BB54	5801-9
64357		3.812	1.750	1.750	3.172	3.078	1.250	0.219	1.901	115	75	MS24693BB52	5801-7
64384		2.890	1.317	1.270	2.100	2.020	0.875	0.219	1.125	90	90	MS24693BB52	5801-7
64446		2.755	1.250	1.203	1.968	1.890	0.875	0.219	1.057	90	90	MS24693BB54	5801-9
64447		2.755	1.250	1.203	1.968	1.890	0.875	0.219	1.057	90	110	MS24693BB54	5801-9
64448		3.812	1.845	1.750	3.172	3.078	1.250	0.416	1.901	90	90	MS24693BB54	5801-9
64449		3.812	1.845	1.750	3.172	3.078	1.250	0.416	1.901	90	77	MS24693BB54	5801-9
64618		3.812	1.845	1.750	3.172	3.078	1.750	0.219	1.901	120	60	MS24693BB54	5801-9

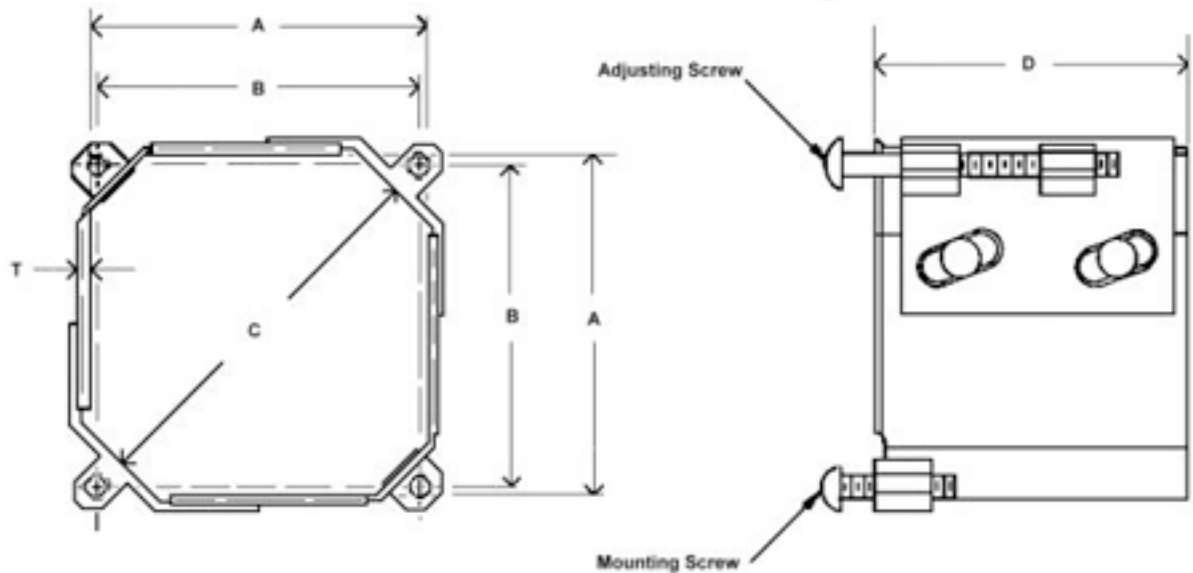
## ARINC Spec. 408 Square Clamps 1" Deep



MSP Inc. P/N	ARINC# 408SPEC	A	B	C	T	MOUNTING SCREW	ADJUSTING SCREW	NOTES
		2 PL. ±.005		2 PL. ±.003				
9962B	2ATI-S	2.175	2.080	2.500	0.040	MS35214-29	MS35214-46	
9963B	3ATI-S	3.175	3.060	3.885	0.040	MS35214-29	MS35214-46	
9963LJ	3ATI-S SPL.	3.175	3.060	3.885	0.040	MS35214-44	MS35214-46	
9964B	4ATI-S	3.975	3.860	5.015	0.040	MS25214-29	MS35214-46	
9964LJ	4ATI-S SPL.	3.975	3.860	5.015	0.040	MS35214-44	MS35214-46	
9965B	5ATI-S	4.975	4.810	6.360	0.050	MS35214-44	MS35214-46	
64565		2.175	2.080	2.500	0.040	AN515PB6R12	AN515PB8R32	
64332B	2ATI-S SPL.	2.175	3.060	2.500	0.040	NAS5701U12	NAS5402U16	TRI-WING SCREWS

64333B	3ATI-S SPL.	3.175	3.060	3.885	0.040	NAS5701U12	NAS5402U16	TRI-WING SCREWS
64334B	4ATI-S SPL.	3.975	3.860	5.015	0.040	NAS5701U12	NAS5402U16	TRI-WING SCREWS
64335B	5ATI-S SPL.	4.975	4.810	6.360	0.050	NAS5702U12	NAS5402U16	TRI-WING SCREWS
64336B	6ATI-S SPL.	5.975	5.810	7.725	0.050	NAS5703U12	NAS5403U16	TRI-WING SCREWS
64397B	3ATI-S SPL.	3.175	3.060	3.885	0.040	MS35214-29	MS35214-46	MIL-C-5541, CL 3
64484B	3ATI-S SPL.	3.175	3.000	3.885	0.040	MS35214-29	MS35214-50	
64487B		1.930	1.843	2.340	0.040	MS35214-29	MS35214-46	
64592B		2.175	2.080	2.500	0.040	MS35214-31	MS35214-46	
64605B	3ATI-S SPL.	3.175	3.060	3.885	0.040	MS35214-29	MS35214-31	
64612B		2.175	2.080	2.500	0.040	MS35214-29	MS35214-46	
64651B	3ATI-S SPL.	3.175	3.000	3.885	0.040	MS35216-29	MS35216-50	

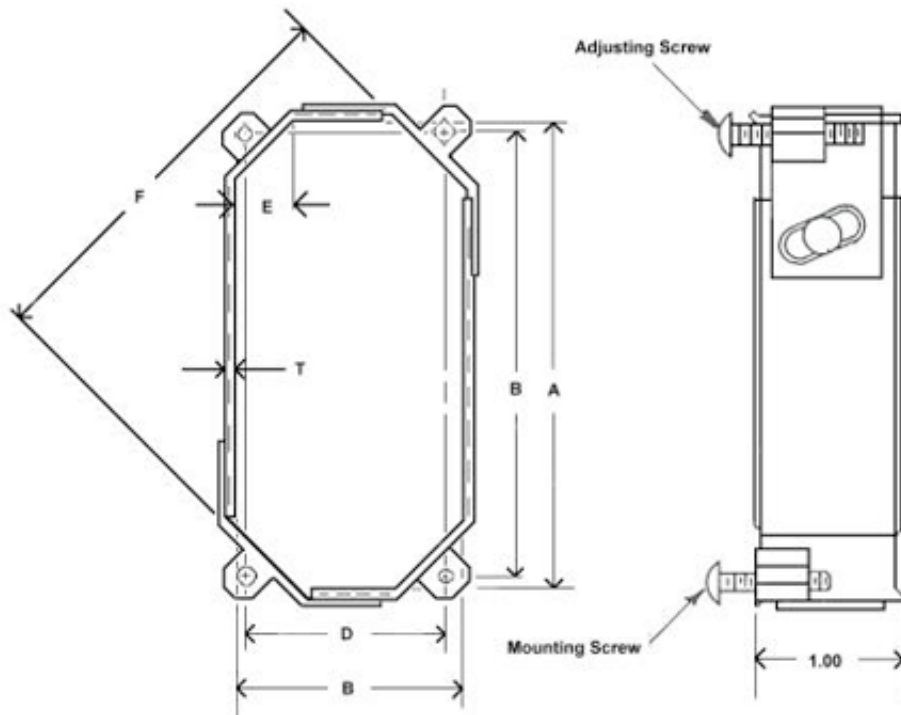
## ARINC Spec. 408 Square Clamps More Than 1" Deep



MSP Inc./P/N	MSP Inc.SPEC	MSP Inc.	MSP Inc.	MSP Inc.	MSP Inc.	MSP Inc.	MSP Inc. SCREW	ADJUSTING SCREW	NOTES
		A	B	C	D	T			
		±.010	±.005	±.015	±.03	±.003			
64457		3.000	3.060	3.780	2.00	0.040	MS35214-29	MS35214-50	
64564		3.975	3.860	5.015	1.50	0.040	MS35214-29	MS35214-50	
64301B	5ATI-S, 2.5" DEEP	4.975	4.810	6.360	2.50	0.050	MS35214-48	MS35214-49	
64311B	3ATI-S, 2" DEEP	3.175	3.060	3.885	2.00	0.040	MS35214-29	MS35214-50	
64323B		4.975	4.810	6.360	2.50	0.050	MS35214-44	MS35214-49	3 TILT
64347B		4.975	4.810	6.360	2.00	0.050	MS35214-44	MS35214-50	
64358B		4.975	4.810	6.360	2.00	0.040	MS35214-44	MS35214-50	SPECIAL

64359B	4ATI-S, 2" DEEP	3.975	3.860	5.015	2.00	0.040	MS35214-29	MS35214-50	
64377B-101	4ATI-S 4" DEEP	3.975	3.860	5.015	4.00	0.040	MS24693BB276	MS51957-75	
64377B-103	4ATI-S, 4" DEEP	3.975	3.860	5.015	4.00	0.040	MS35215-57	MS51957-75	
64378B-101	5ATI-S, 4" DEEP	4.975	4.810	6.360	4.00	0.050	MS24693BB276	MS51957-75	
64378B-103	5ATI-S, 4" DEEP	4.975	4.810	6.360	4.00	0.050	MS35215-57	MS51957-75	
64416B	2ATI-S, 2" DEEP	2.175	2.080	2.500	2.00	0.040	MS35214-29	MS35214-50	
64421B		4.975	4.810	6.360	2.00	0.040	64421-4	64421-3	
64433	6ATI-S, 2" DEEP	5.975	5.810	7.735	2.00	0.050	MS35215-57	MS35215-62	
64435B-101	3ATI-S, 4" DEEP	3.175	3.060	3.885	4.00	0.040	MS24693BB30	AN515C8R48	
64435B-103	3ATI-S, 4" DEEP	3.175	3.060	3.885	4.00	0.040	MS35214-29	AN515C8R48	
64435B-105	3ATI-S, 4" DEEP	3.175	3.060	3.885	4.00	0.040	MS35214-31	8-32 X 3-1/2	
64455B		3.175	3.060	3.885	2.00	0.040	MS35214-29	MS35214-50	SPECIAL LIGHTING
64465		2.175	2.080	2.500	2.00	0.040	MS35216-29	MS35214-50	NOTE 8
64466		3.175	3.060	3.885	2.00	0.040	MS35216-29	MS35214-50	NOTE 8
64467		4.975	4.810	6.360	4.00	0.050	MS35217-57	MS51957-75	NOTE 8
64488B		3.175	3.060	3.885	2.00	0.040	M24693BB30	MS35214-50	
64545		2.056	2.079	2.500	2.00	0.040	MS35214-29	MS35214-50	
64566B		3.175	3.060	3.885	3.60	0.040	64566-2	64566-3	
64579B		2.500	2.385	2.920	2.00	0.040	MS35214-29	MS35214-50	
64586B-40		3.975	3.860	5.015	2.00	0.040	NAS5701U12	NAS5402U16	
64595B		3.175	3.060	3.885	2.00	0.040	MS24693BB52	MS24693BB62	
64597B		3.175	3.060	3.885	2.00	0.040	MS35216-29	MS35216-50	
64599B		3.175	3.000	3.885	2.00	0.040	MS35214-29	MS35214-50	
64601B		3.284	3.060	4.038	2.00	0.040	MS35214-29	MS35214-50	
64617B		2.175	2.080	2.500	2.00	0.040	MS35214-29	MS35214-50	
64622B		3.175	3.060	3.885	2.00	0.040	MS24693BB52	MS35215-63	
64623B		4.975	4.810	6.360	4.00	0.050	MS35215-57	MS51957-75	
64624B		4.975	4.810	6.360	2.00	0.040	MS35214-44	MS35214-50	
64629B	5ATI-S, 2" DEEP	4.975	4.810	6.360	2.00	0.050	MS35214-44	MS35214-50	
64631B		3.175	3.060	3.885	2.00	0.040	MS24693BB32	MS24693BB62	
64635B		3.175	3.000	3.885	2.00	0.040	MS35214-46	MS35214-50	
64636B		3.175	3.060	3.885	2.00	0.040	MS35214-44	MS35214-50	
64638B		3.175	3.000	3.885	2.00	0.040	MS35214-33	MS35214-113	
64640B		3.175	3.060	3.885	2.00	0.040	MS35214-29	MS35214-50	
64649B		3.175	3.060	3.885	2.00	0.040	MS24693BB30	MS24693BB62	
64650B		3.175	3.060	3.885	2.00	0.040	MS35216-29	MS35216-50	
64652B		3.175	3.000	3.885	4.00	0.040	MS35214-29	AN515C8R48	

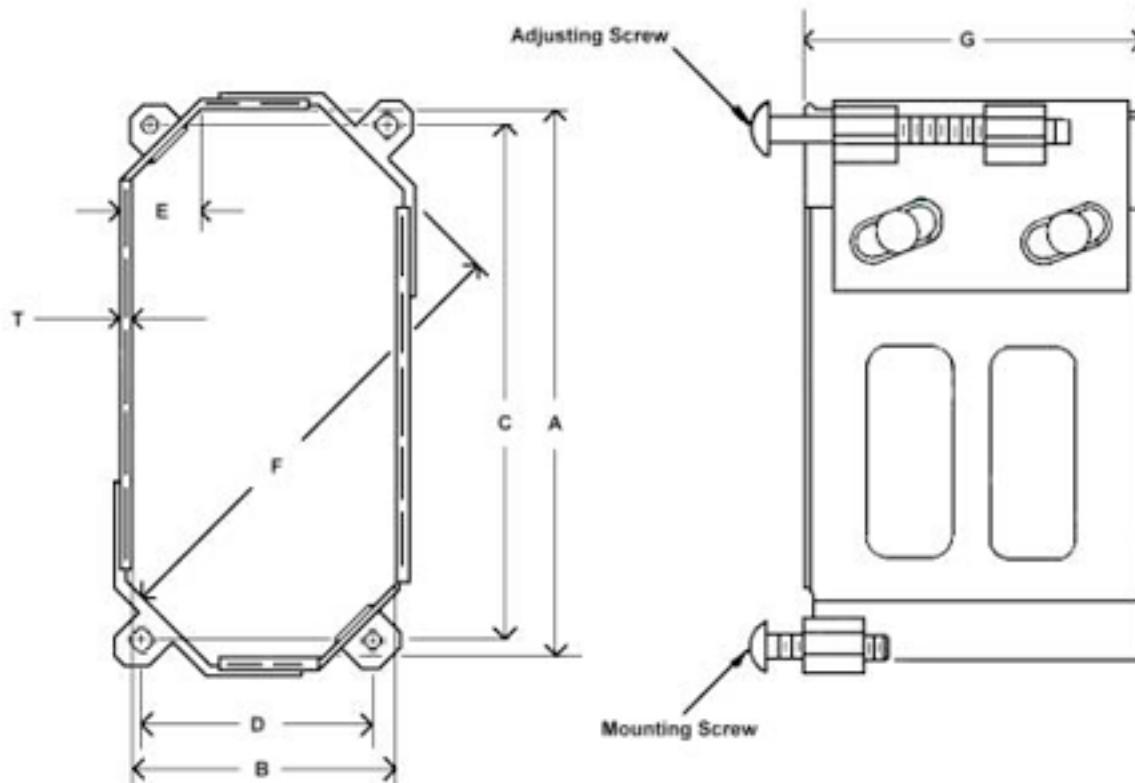
# ARINC Spec. 408 Rectangular Clamps, Vertical Scale 1" Deep



MSP Inc. P/N	ARINC# 408 SPEC	A ±.015	B ±.015	C ±.005	D ±.005	E ±.010	F REF.	T ±.003	MOUNTING SCREW	ADJUSTING SCREW
64469B	1.5X3ATI-R	3.175	1.457	3.060	1.340	0.428	2.670	0.040	MS35214-29	MS35214-46
64337B	1/2-4X4ATI-R	3.975	1.795	3.860	1.680	0.428	3.476	0.040	NAS5701U12	NAS5402U16
64338B	2X4ATI-R	3.975	2.175	3.860	2.060	0.426	3.746	0.040	NAS5701U12	NAS5402U16
64339B	3X4ATI-R	3.975	3.175	3.860	3.060	0.428	4.451	0.040	NAS5701U12	NAS5402U16
64289B	4.815X4.065	4.815	4.065	4.420	3.720	0.662	5.365	0.050	MS35214-44	MS35214-46
64302B	2X4ATI-R	3.975	2.175	3.860	2.060	0.426	3.746	0.040	MS35214-29	MS35214-46
64304B	3X4ATI-R	3.975	3.175	3.860	3.060	0.428	4.451	0.040	MS35214-29	MS35214-46
64309B		1.296	3.172	1.187	3.060	0.406	2.660	0.040	MS35213-29	MS35214-31
64320B	1/2-4X4ATI-R	3.975	1.795	3.860	1.680	0.428	3.476	0.040	MS35214-29	MS35214-46
64321B	3X1.5ATI-R	1.457	3.175	1.340	3.060	0.428	2.670	0.040	MS24693BB30	MS35214-31
64324B		2.781	2.000	2.719	2.188	0.406	3.058	0.040	MS35214-29	MS35214-31
64325B		1.555	3.175	1.370	3.000	0.428	2.725	0.040	MS35214-29	MS35214-46
64340B	2-1/2ATI-R	1.087	2.175	1.040	2.080	0.406	2.464	0.040	MS24693BB30	MS35214-46
64343B	4X1/2-4ATI-R	1.795	3.975	1.680	3.860	0.428	3.476	0.040	MS35214-29	MS35214-46
64418B	1.5X4ATI-R	3.975	1.457	3.860	1.340	0.428	3.236	0.040	MS35214-29	MS35214-46
64419B	ARINC 568	1.457	3.175	1.340	3.060	0.428	2.670	0.040	MS35214-29	MS35214-46

64422B	1X2ATI-R	2.175	0.958	2.080	0.863	0.406	1.641	0.040	MS35214-29	MS35214-46
64423B	1.5X3ATI-R	3.175	1.457	3.060	1.340	0.428	2.670	0.040	MS35214-29	MS35214-46
64424B	5X4ATI-R	3.975	4.975	3.860	4.810	0.476	5.655	0.050	MS35214-44	MS35214-46
64461B		2.000	2.750	1.885	2.635	0.428	2.753	0.040	MS35214-29	MS35214-46
64482B		1.457	2.500	1.340	2.405	0.428	2.193	0.040	MS35214-29	MS35214-46
64497B	3X5ATI-R	4.975	3.175	4.810	3.060	0.476	5.109	0.050	MS35214-44	MS35214-46
64498B	4X5ATI-R	4.975	3.975	4.810	3.860	0.476	5.655	0.050	MS35214-44	MS35214-46
64499B	2X1ATI-R	0.958	2.175	0.863	2.080	0.406	1.640	0.040	MS35214-29	MS35214-46
64500B	4X1.5ATI-R	1.457	3.975	1.340	3.860	0.428	3.236	0.040	MS35214-29	MS35214-46
64501B	4X2ATI-R	2.175	3.975	2.060	3.860	0.426	3.746	0.040	MS35214-29	MS35214-46
64502B	4X3ATI-R	3.175	3.975	3.060	3.860	0.428	4.451	0.040	MS35214-29	MS35214-46
64503B	5X3ATI-R	3.175	4.975	3.060	4.810	0.476	5.109	0.050	MS35214-44	MS35214-46
64504B	6X5ATI-R	4.975	5.975	4.810	5.810	0.512	7.019	0.050	MS35215-56	MS35215-60
64525B	5X6ATI-R	5.975	4.975	5.810	4.810	0.512	7.019	0.050	MS35215-56	MS35215-60

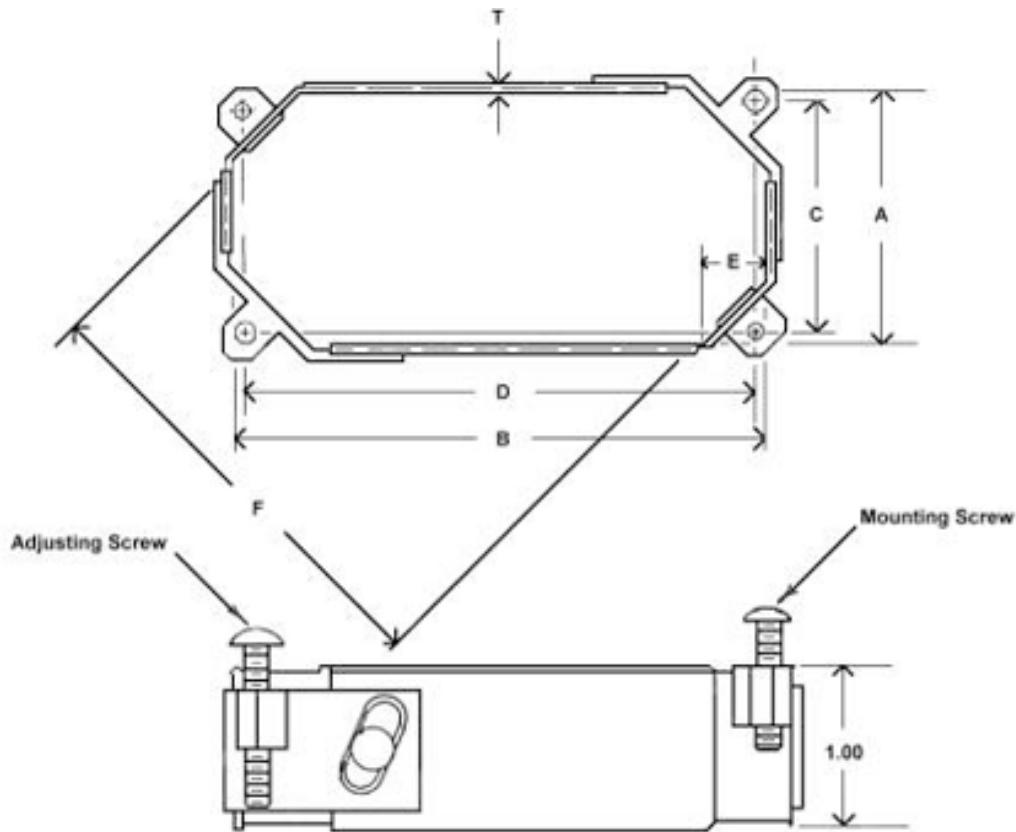
## ARINC Spec. 408 Rectangular Clamps, Vertical Scale More Than 1" Deep



MSP      ARINC# 408      A    B    C    D    E    F    G    T    MOUNTING    ADJUSTING

Inc.P/N	SPEC	±.015	±.015	±.005	±.005	±.010	REF.	±.03	±.003	SCREW	SCREW
64310	.980 CORNER RAD.	4.746	3.996	4.700	3.890	.980 RAD.		5.00	0.032	AN507B1032R12	AN520B10R48
64327	1.125 COR. RAD.	5.133	4.883	4.750	4.500	1.125		4.25	0.032	AN507B1032R12	AN520B10R48
64468	3X5ATI-R	4.975	3.175	4.810	3.060	0.476	5.109	4.00	0.050	MS35217-57	AN520C10R48
64474	3X4ATI-R	3.975	3.175	3.860	3.060	0.428	4.451	4.00	0.040	MS35216-29	MS35216-50
64477		5.133	4.883	4.750	4.500	0.635	6.187	2.00	0.050	MS35214-44	MS35214-50
64495	3X5ATI-R	4.975	3.175	4.810	3.060	0.428	5.182	4.00	0.050	MS35217-57	AN520C10R48
64289B	4.815X4.065	4.815	4.065	4.420	3.720	0.662	5.365	1.00	0.050	MS35214-44	MS35214-46
64302B	2X4ATI-R	3.975	2.175	3.860	2.060	0.426	3.746	1.00	0.040	MS35214-29	MS35214-46
64303B		4.975	3.975	4.810	3.860	0.476	5.655	4.00	0.050	MS35214-48	MS35214-49
64304B	3X4ATI-R	3.975	3.175	3.860	3.060	0.428	4.451	1.00	0.040	MS35214-29	MS35214-46
64320B	1/2-4X4ATI-R	3.975	1.795	3.860	1.680	0.428	3.476	1.00	0.040	MS35214-29	MS35214-46
64324B		2.781	2.000	2.719	2.188	0.406	3.058	1.00	0.040	MS35214-29	MS35214-31
64337B	1/2-4X4ATI-R	3.975	1.795	3.860	1.680	0.428	3.476	1.00	0.040	NAS5701U12	NAS5402U16
64338B	2X4ATI-R	3.975	2.175	3.860	2.060	0.426	3.746	1.00	0.040	NAS5701U12	NAS5402U16
64339B	3X4ATI-R	3.975	3.175	3.860	3.060	0.428	4.451	1.00	0.040	NAS5701U12	NAS5402U16
64418B	1.5X4ATI-R	3.975	1.457	3.860	1.340	0.428	3.236	1.00	0.040	MS35214-29	MS35214-46
64422B	1X2ATI-R	2.175	0.958	2.080	0.863	0.406	1.641	1.00	0.040	MS35214-29	MS35214-46
64423B	1.5X3ATI-R	3.175	1.457	3.060	1.340	0.428	2.670	1.00	0.040	MS35214-29	MS35214-46
64426B-101	5X6ATI-R	5.975	4.975	5.810	4.810	0.512	7.019	2.00	0.050	AN507B1032R12	MS35215-63
64426B-103	5X6ATI-R	5.975	4.975	5.810	4.810	0.512	7.019	2.00	0.050	MS35215-57	MS35215-63
64428B	1.5X3ATI-R	3.175	1.457	3.060	1.340	0.428	2.670	2.00	0.040	MS35214-29	MS35214-50
64429B	1.4X4ATI-R	3.975	1.457	3.860	1.340	0.428	3.236	2.00	0.040	MS35214-29	MS35214-50
64430B	2X4ATI-R	3.975	2.175	3.860	2.060	0.426	3.746	2.00	0.040	MS35214-29	MS35214-50
64431B	3X4ATI-R	3.975	3.175	3.860	3.060	0.428	4.451	2.00	0.040	MS35214-29	MS35214-50
64432B	1X2ATI-R	2.175	0.958	2.080	0.863	0.406	1.641	2.00	0.040	MS35214-29	MS35214-50
64434B	2X4ATI-R	3.975	2.175	3.860	2.060	0.428	3.746	4.00	0.050	MS25214-29	AN515B8R48
64436B	3X4ATI-R	3.975	3.175	3.860	3.060	0.428	4.451	2.00	0.040	MS35214-29	AN515C8R48
64469	Locking Closing Bracket	3.175	1.457	3.060	1.340	0.428	2.670	1.00	0.040	MS35216-44	MS35216-46
64476B	1/2-4X4ATI-R	3.975	1.795	3.860	1.680	0.428	3.476	2.00	0.040	MS35214-29	MS35214-50
64480B	3 TILT	4.015	4.000	3.937	3.927	0.428	5.150	2.00	0.040	MS35214-29	MS35214-50
64497B	3X5ATI-R	4.975	3.175	4.810	3.060	0.476	5.109	1.00	0.050	MS35214-44	MS35214-46
64498B	4X5ATI-R	4.975	3.975	4.810	3.860	0.476	5.655	1.00	0.050	MS35214-44	MS35214-46
64506B-101	4X5ATI-R	4.975	3.975	4.810	3.860	0.476	5.655	2.00	0.050	MS35215-57	MS35215-63
64508B-101	4X5ATI-R	4.975	3.975	4.810	3.860	0.476	5.655	4.00	0.050	AN507B1032R12	AN520B10R48
64525B	5X6ATI-R	5.975	4.975	5.810	4.810	0.512	7.019	1.00	0.050	MS35215-56	MS35215-60

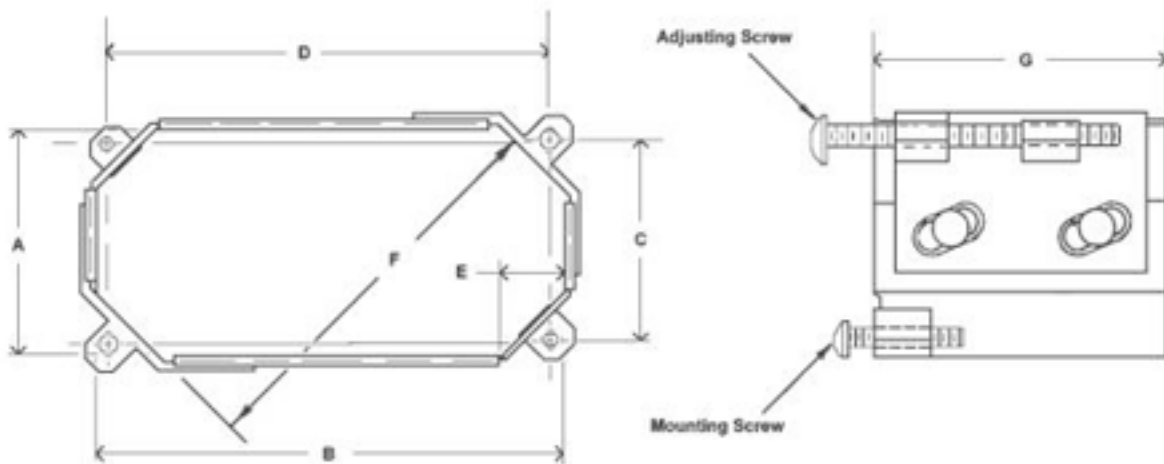
## ARINC Spec. 408 Rectangular Clamps, Horizontal Scale, 1" Deep



MSP Inc. P/N	ARINC# 408SPEC	A	B	C	D	E	F	T	MOUNTING SCREW	ADJUSTING SCREW	NOTES
		±.015	±.015	±.005	±.005	±.010	REF.	±.003			
64469B	1.5X3ATI-R	3.175	1.457	3.060	1.340	0.428	2.670	0.040	MS35214-29	MS35214-46	NOTE 8
64337B	1/2-4X4ATI-R	3.975	1.795	3.860	1.680	0.428	3.476	0.040	NAS5701U12	NAS5402U16	TRI-WING SCREWS
64338B	2X4ATI-R	3.975	2.175	3.860	2.060	0.426	3.746	0.040	NAS5701U12	NAS5402U16	TRI-WING SCREWS
64339B	3X4ATI-R	3.975	3.175	3.860	3.060	0.428	4.451	0.040	NAS5701U12	NAS5402U16	TRI-WING SCREWS
64289B	4.815X4.065	4.815	4.065	4.420	3.720	0.662	5.365	0.050	MS35214-44	MS35214-46	
64302B	2X4ATI-R	3.975	2.175	3.860	2.060	0.426	3.746	0.040	MS35214-29	MS35214-46	
64304B	3X4ATI-R	3.975	3.175	3.860	3.060	0.428	4.451	0.040	MS35214-29	MS35214-46	
64309B		1.296	3.172	1.187	3.060	0.406	2.660	0.040	MS35213-29	MS35214-31	
64320B	1/2-4X4ATI-R	3.975	1.795	3.860	1.680	0.428	3.476	0.040	MS35214-29	MS35214-46	
64321B	3X1.5ATI-R	1.457	3.175	1.340	3.060	0.428	2.670	0.040	MS24693BB30	MS35214-31	
64324B		2.781	2.000	2.719	2.188	0.406	3.058	0.040	MS35214-29	MS35214-31	
64325B		1.555	3.175	1.370	3.000	0.428	2.725	0.040	MS35214-29	MS35214-46	
64343B	4X1/2-4ATI-R	1.795	3.975	1.680	3.860	0.428	3.476	0.040	MS35214-29	MS35214-46	
64418B	1.5X4ATI-R	3.975	1.457	3.860	1.340	0.428	3.236	0.040	MS35214-29	MS35214-46	
64419B	ARINC 568	1.457	3.175	1.340	3.060	0.428	2.670	0.040	MS35214-29	MS35214-46	
64422B	1X2ATI-R	2.175	0.958	2.080	0.863	0.406	1.641	0.040	MS35214-29	MS35214-46	
64423B	1.5X3ATI-R	3.175	1.457	3.060	1.340	0.428	2.670	0.040	MS35214-29	MS35214-46	

64424B	5X4ATI-R	3.975	4.975	3.860	4.810	0.476	5.655	0.050	MS35214-44	MS35214-46
64461B		2.000	2.750	1.885	2.635	0.428	2.753	0.040	MS35214-29	MS35214-46
64497B	3X5ATI-R	4.975	3.175	4.810	3.060	0.476	5.109	0.050	MS35214-44	MS35214-46
64498B	4X5ATI-R	4.975	3.975	4.810	3.860	0.476	5.655	0.050	MS35214-44	MS35214-46
64499B	2X1ATI-R	0.958	2.175	0.863	2.080	0.406	1.640	0.040	MS35214-29	MS35214-46
64501B	4X2ATI-R	2.175	3.975	2.060	3.860	0.426	3.746	0.040	MS35214-29	MS35214-46
64525B	5X6ATI-R	5.975	4.975	5.810	4.810	0.512	7.019	0.050	MS35215-56	MS35215-60

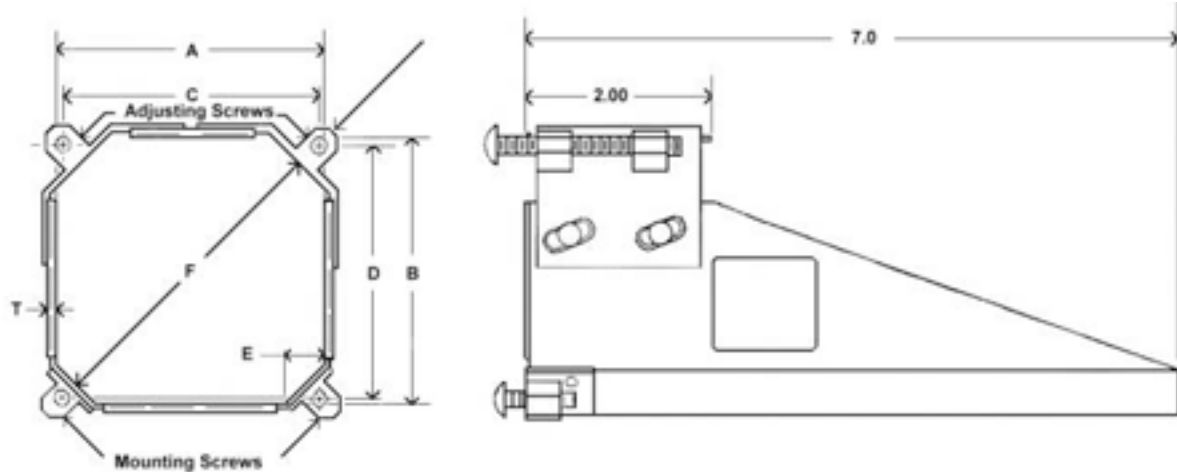
## ARINC Spec. 408 Rectangular Clamps, Horizontal Scale, Over 1" Deep



MSP Inc./P/N	ARINC# 408SPEC	A ±.015	B ±.015	C ±.005	D ±.005	E ±.010	F REF.	G ±.03	T ±.003	MOUNTING SCREW	ADJUSTING SCREW
64464		3.175	3.975	3.060	3.860	0.428	4.410	2.000	0.040	MS35214-29	MS35214-50
64414B-103	5X3ATI-R	3.175	4.975	3.060	4.810	0.476	5.109	4.000	0.050	MS5215-57	AN520B10R48
64417B-101	5X4ATI-R	3.975	4.975	3.860	4.810	0.476	5.655	4.000	0.050	AN507B1032R12	AN520B10R48
64417B-103	5X4ATI-R	3.975	4.975	3.860	4.810	0.476	5.655	4.000	0.050	MS35215-57	AN520B10R48
64419B	ARINC 568	1.457	3.175	1.340	3.060	0.428	2.670	1.000	0.040	MS35214-29	MS35214-46
64427B-101	5X4ATI-R	3.975	4.975	3.860	4.810	0.476	5.655	2.000	0.050	AN507B1032R12	MS35215-63
64427B-103	5X4ATI-R	3.975	4.975	3.860	4.810	0.476	5.655	2.000	0.050	MS35215-57	MS35215-63
64479B		1.555	3.165	1.370	3.000	0.428	2.735	2.000	0.040	MS35214-29	MS35214-50
64481B	3X1.5ATI-R	1.457	3.175	1.340	3.060	0.428	2.670	2.000	0.040	MS35214-29	MS35214-50
64494B-103	4.225	4.975	4.060	4.810	0.476	5.829	2.000	0.040	MS35214-44	MS35214-50	
64512B	4X2ATI-R	2.175	3.975	2.060	3.860	0.426	3.746	2.000	0.040	MS35214-29	MS35214-50
64514B-101	6X5ATI-R	4.975	5.975	4.810	5.810	0.512	7.019	4.000	0.050	AN507B1032R12	AN520B10R48
64514B-103	6X5ATI-R	4.975	5.975	4.810	5.810	0.512	7.019	4.000	0.050	MS35215-57	AN520B10R48

64515B	2X1ATI-R	0.958	2.175	0.863	2.080	0.406	1.640	2.000	0.040	MS35214-29	MS35214-50
64567B	6X5ATI-R	4.975	5.975	4.810	5.810	0.512	7.019	4.000	0.050	MS35217-57	MS35217-63
64589B		7.95	2.175	7.835	2.060	0.428	6.554	4.000	0.040	MS35216-29	AN515C8R48

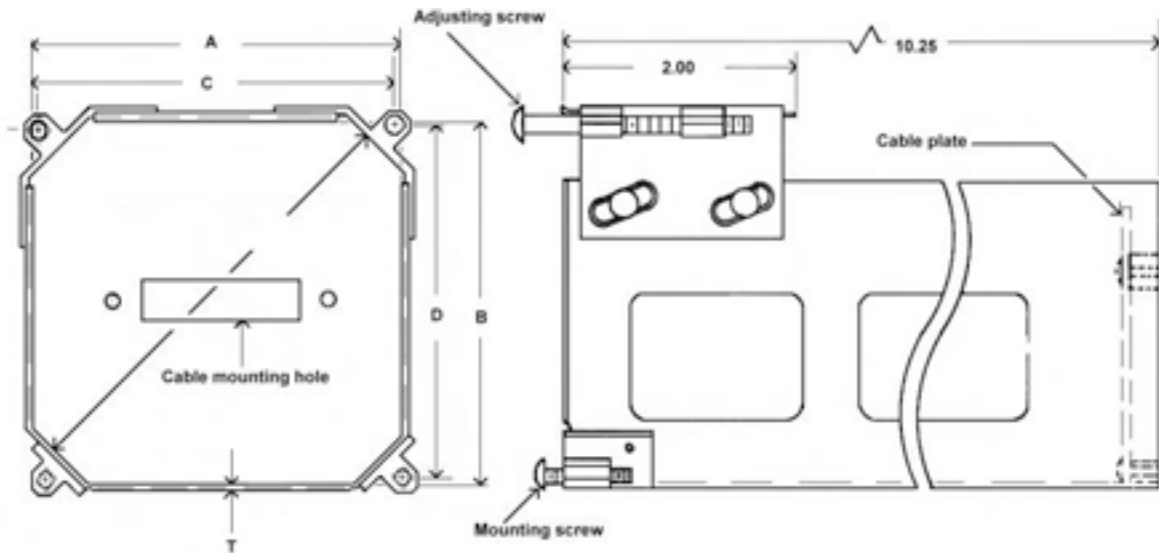
## ARINC Spec. 408 Type Shelf Clamps, 7" Deep



MSP Inc. P/N	ARINC# 408 SPEC	A ±.010	B ±.010	C ±.005	D ±.005	E ±.010	F REF.	MOUNTING SCREWS	ADJUSTING SCREW
64548		2.781	2.500	2.719	2.188	0.406	3.058	MS35214-29	MS35214-35
64549		4.783	5.025	4.500	4.750	0.476	6.459	MS35215-57	MS35215-63
64391B-101	4ATI-S	3.975	3.975	3.860	3.860	0.428	5.015	MS24693BB30 & 52	MS35214-29 & -50
64391B-103	4ATI-S	3.975	3.975	3.860	3.860	0.428	5.015	MS35214-29 & -44	MS35214-35 & -50
64391B-105	4ATI-S	3.975	3.975	3.860	3.860	0.428	5.015	MS35214-44	MS35214-50
64405B-101	5ATI-S	4.975	4.975	4.810	4.810	0.476	6.360	MS24693BB52	MS35214-50
64405B-103	5ATI-S	4.975	4.975	4.810	4.810	0.476	6.360	MS35214-44	MS35214-50
64409B-101	3ATI-S	3.175	3.175	3.060	3.060	0.428	3.885	MS24693BB30 & 52	MS35214-35 & -50
64409B-103	3ATI-S	3.175	3.175	3.060	3.060	0.428	3.885	MS35214-29 & -44	MS35214-35 & -50
64409B-105	3ATI-S	3.175	3.175	3.060	3.060	0.428	3.885	MS35214-44	MS35214-50
64409B-107	3ATI-S	3.175	3.175	3.060	3.060	0.428	3.885		
64409B-109	3ATI-S	3.175	3.175	3.060	3.060	0.428	3.885		
64437B-101	4X3ATI-R	3.975	3.175	3.860	3.060	0.428	4.451	MS24693BB30 & -52	MS35214-29 & -50
64437B-103	4X3ATI-R	3.975	3.175	3.860	3.060	0.428	4.451	MS35214-29 & -44	MS35214-35 & -50
64438B-101	5X4ATI-R	4.975	3.975	4.810	3.810	0.476	5.655	MS24693BB52	MS35214-50
64438B-103	5X4ATI-R	4.975	3.975	4.810	3.810	0.476	5.655	MS35214-44	MS35214-50
64440B-101	6X5ATI-R	5.975	4.975	5.810	4.810	0.512	7.019	MS24693BB274	MS35215-63
64440B-103	6X5ATI-R	5.975	4.975	5.810	4.810	0.512	7.019	MS35215-57	MS35215-63
64442B-103	6ATI-S	5.975	5.975	5.810	5.810	0.512	7.725	MS35215-57	MS35215-63

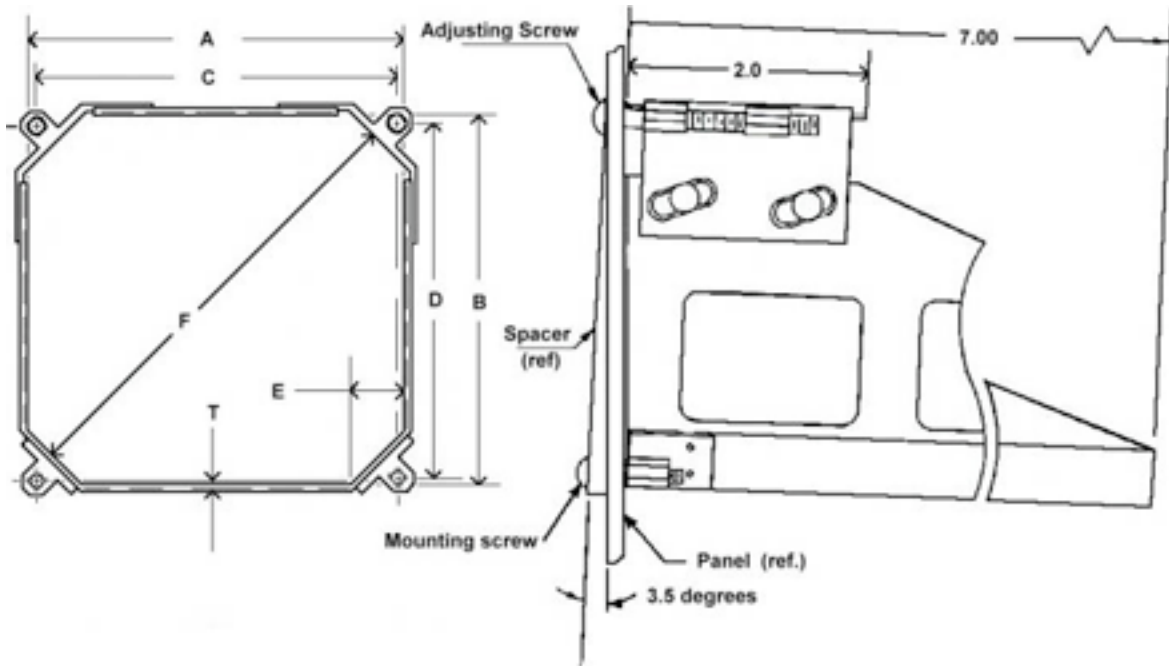
64458B-101	5X4.25ATI-R	4.975	4.225	4.810	4.060	0.476	5.829	MS24693BB52	MS35214-50
64458B-103	5X4.25ATI-R	4.975	4.225	4.810	4.060	0.476	5.829	MS35214-44	MS35214-50
64483B-101		4.975	4.600	4.810	4.435	0.476	6.156	MS24693BB52	MS35214-50
64483B-103		4.975	4.600	4.810	4.435	0.476	6.156	MS35214-44	MS35214-50
64489B-101	6X2ATI-R	5.975	2.175	5.810	2.012	0.512	5.089	MS24693BB52	MS35214-50
64489B-103	6X2ATI-R	5.975	2.175	5.810	2.012	0.512	5.089	MS35214-44	MS35214-50
64550B-101	3X4ATI-R	3.975	4.975	3.810	4.810	0.476	5.655	MS24693BB52	MS35214-50
64550B-103	3X4ATI-R	3.975	4.975	3.810	4.810	0.476	5.655	MS35214-44	MS35214-50
64551B	3X4ATI-R	3.175	3.975	3.060	3.860	0.428	4.451	MS35214-29	MS35214-50
64552B	6X5ATI-R	5.975	4.975	5.810	4.810	0.512	7.019	MS35215-57	MS35215-63
64556B-103		6.025	2.205	5.812	2.012	.476	5.131	MS35214-50	MS35214-44
64557B-101		4.025	5.005	3.810	4.810	0.476	5.697	MS24693B52	MS35214-50
64557B-103		4.025	5.005	3.810	4.810	0.476	5.697	MS35214-44	MS35214-50
64569B	3ATI-S	3.175	3.175	3.060	3.060	0.428	3.885	MS35214-29	MS35214-50
64572B		5.975	4.975	5.810	4.810	0.512	7.019	MS35215-57	MS35215-63
64577B		5.975	4.975	5.810	4.810	0.512	7.019	MS35215-57	MS35215-63
64602B		4.84	4.090	4.500	3.750	0.660	4.994	MS35214-46	MS35214-50
64604B		5.975	4.975	5.810	4.810	0.512	7.019	MS35215-57	MS35215-63
64615B		3.425	3.175	3.310	3.060	0.428	3.810	MS35214-29	MS35214-50
64616B		5.976	4.975	5.810	4.810	0.476	7.019	MS35215-57	MS35215-63
64621B-101	3ATI-S	3.175	3.175	3.060	3.060	0.428	3.885	MS24693BB52	MS35214-50
64621B-103	3ATI-S	3.175	3.175	3.060	3.060	0.428	3.885	MS35214-44	MS35214-50
64625B		4.975	4.975	4.810	4.810	0.476	6.360	MS24692C52	MS35216-50
64632B		7.699	5.200	7.534	5.035	0.512	8.097	MS35215-57	MS35215-63
64639B		4.975	5.202	4.810	5.037	0.476	6.244	MS35214-44	MS35214-50
64643B		10.941	3.975	10.815	3.860	0.428	9.691	MS24693BB8	MS35214-50
64644B		4.975	4.975	4.810	4.810	0.476	6.360	MS35214-44	MS35214-50
64646B		4.975	4.600	4.810	4.435	0.476	6.156	MS35214-44	MS35214-50

## ARINC Spec. 408 Type Instrument Tray



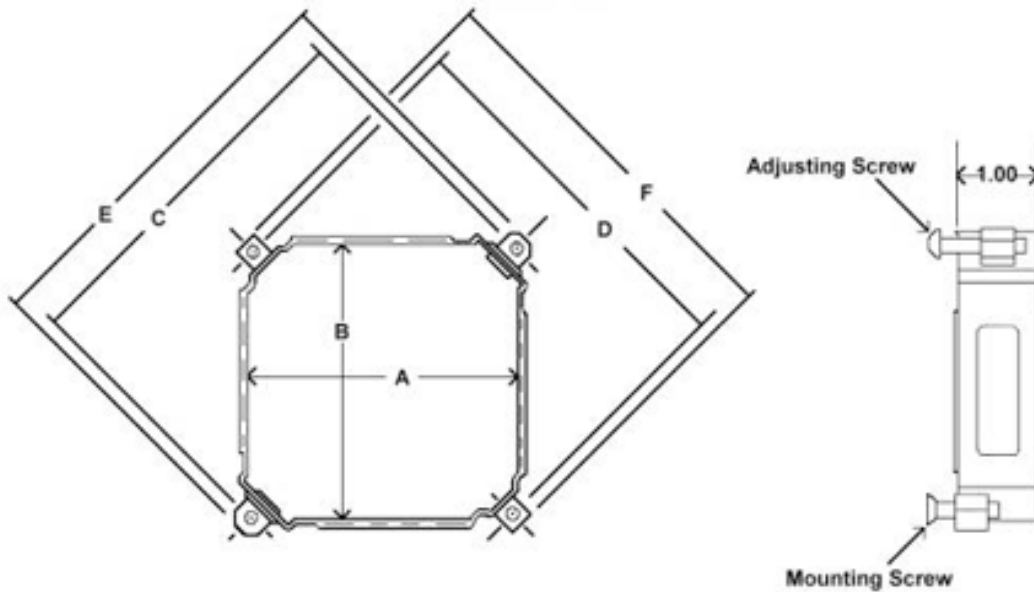
MSP Inc. P/N	ARINC# 408 SPEC	A	B	C	D	E	F	MOUNTING SCREWS	ADJUSTING SCREW
		±.010	±.010	±.005	±.005	±.010	REF.		
64490	3ATI-S TRAY	3.175	3.175	3.060	3.060	0.428	3.885	MS35214-44	MS35214-50
64555	3ATI-S TRAY	3.175	3.180	3.060	3.060	0.428	3.885	MS35214-44	MS35214-50
64521B	4ATI-S TRAY	3.975	3.975	3.860	3.860	0.428	5.015	MS35214-44	MS35214-50
64634B		4.800	3.175	3.674	3.612	0.428	5.033	MS35214-44	MS35214-50

## ARINC 408A Angle Mounting Clamps



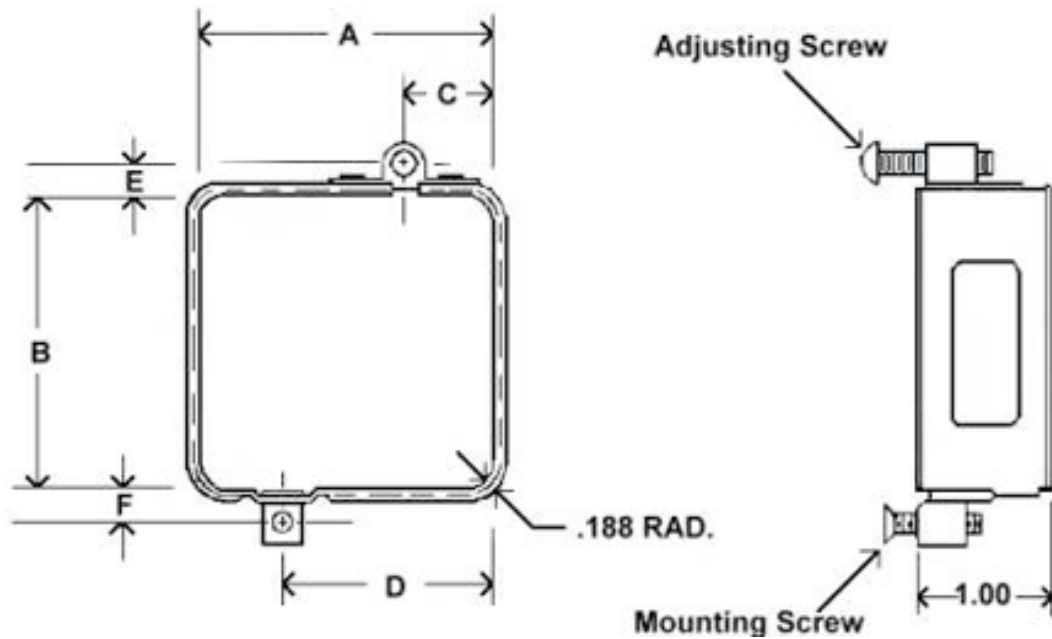
MSP Inc. P/N	ARINC# 408 SPEC	A	B	C	D	E	F	MOUNTING SCREWS	ADJUSTING SCREW
		±.010	±.010	±.005	±.005	±.010	REF.		
64490	3ATI-S TRAY	3.175	3.175	3.060	3.060	0.428	3.885	MS35214-44	MS35214-50
64555	3ATI-S TRAY	3.175	3.180	3.060	3.060	0.428	3.885	MS35214-44	MS35214-50
64521B	4ATI-S TRAY	3.975	3.975	3.860	3.860	0.428	5.015	MS35214-44	MS35214-50
64523B	4X5ATI-S TRAY	4.975	3.975	4.810	3.810	0.476	5.655	MS35214-44	MS35214-50
64522B	5ATI-S TRAY	4.975	4.975	4.810	4.810	0.476	6.360	MS35214-44	MS35214-50
64634B		4.800	3.175	3.674	3.612	0.428	5.033	MS35214-44	MS35214-50

## Square and Rectangular Clamps with Radius on Corners



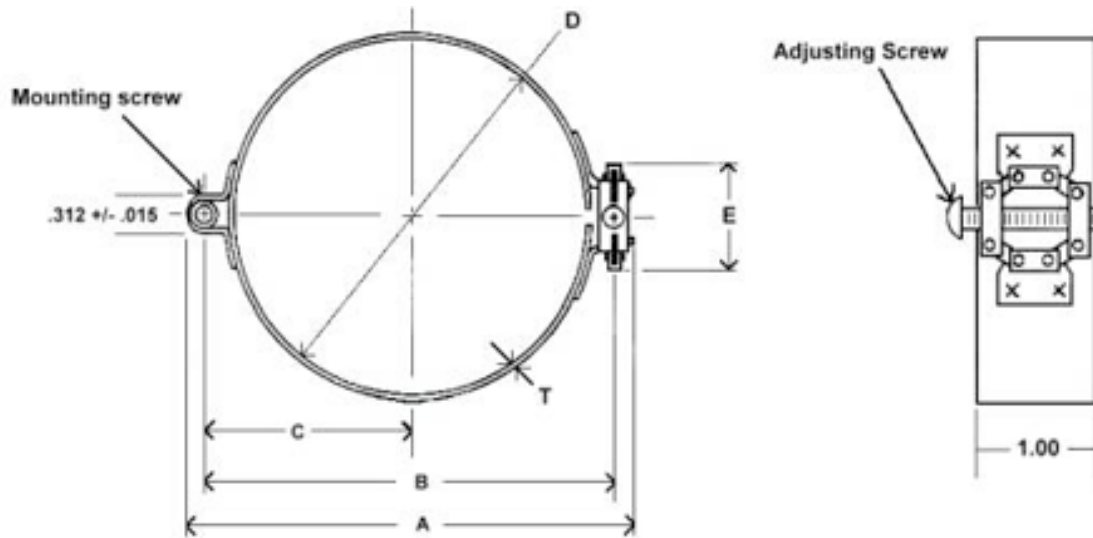
MSP Inc. P/N	A	B	C	D	E	F	MOUNTING SCREW	ADJUSTING SCREW
	±.010	±.010	±.010	±.010	MAX.	MAX.		
64295	3.160	3.160	4.353	4.353	4.733	4.733	MS24693BB52	MS35214-46
64298	3.188	3.188	4.407	4.295	4.750	4.630	MS24693BB52	MS35214-46
64322	3.150	3.150	4.326	4.326	4.625	4.625	MS24693BB54	MS35214-46
64558	3.750	3.750	5.652	5.624	5.910	5.910	MS24693BB52	MS35214-46
64562	3.156	3.156	4.326	4.326	4.630	4.630	MS24693BB52	MS35214-46
64563	3.937	3.937	6.652	5.624	5.906	5.906	MS24693BB52	64563-7

# Square and Rectangular clamps with radius on corners

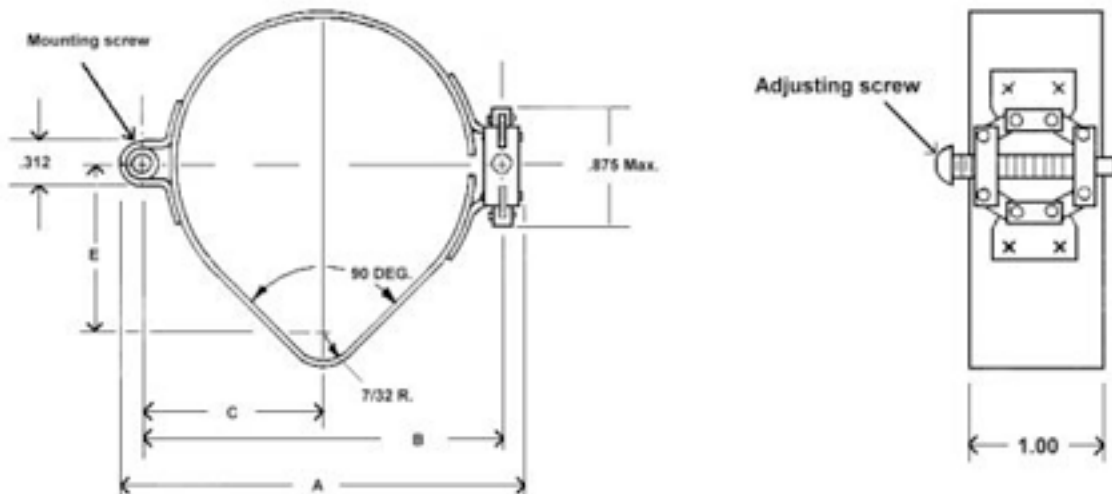


MSP Inc. P/N	A ±.010	B ±.010	C ±.005	D ±.005	E ±.010	F REF.	MOUNTING SCREW	ADJUSTING SCREW
64286	3.690	3.960	1.845	1.845	0.442	0.442	MS24593BB52	AN520B10R26(MOD)
64293	2.250	2.250	1.125	1.125	0.242	0.242	MS24693BB52	AN515B8R14
64296	2.260	2.270	0.690	1.620	0.242	0.242	MS24693BB52	AN515B8R14
64297	1.975	1.975	1.355	0.665	0.242	0.242	MS24693BB52	AN515B8R14
64308	1.937	1.937	-0.237	-0.237	0.237	0.237	MS24693BB52	5801-7
64561	1.937	1.937	2.984	2.984	2.984	2.984	MS24693BB52	MS35214-46
64568	7.510	9.500	0.205	0.205	-0.205	-0.205	64421-4	64421-3
64576	5.260	5.260	2.947	2.970	0.340	0.340	MS24693BB276	MS35214-45
64583	1.937X2	1.937X2	-0.237	-0.237	0.237	0.237	MS35214-44	MS35215-58
64603	1.937	1.937	0.968	0.968	0.232	0.232	MS24693BB52	MS24693BB52
64608	3.950	3.950	-0.085	-0.085	-0.085	-0.085	MS24693BB52	MS35214-46
64611	1.800	1.480	0.900	1.411	0.340	0.360	MS24693BB30	MS35214-46
64630	2.750	2.750	3.000	3.000	0.250	0.250	MS35214-29	MS35214-46
64637	5.840	1.865	6.095	-0.252	-0.035	-0.035	MS24693BB31	MS24693BB31
64582-101	1.000	2.000	1.850	1.600	-0.222	-0.200	MS24693BB29	MS35214-30
64582-103	1.250	1.690	2.100	1.600	-0.222	-0.200	MS24693BB29	MS35214-30
64609B	6.250	5.500	-0.330	6.580	-0.363	-0.363	MS35214-44	MS35214-50
64610B	6.250	5.500	-0.225	6.475	-0.335	-0.335	MS35214-44	MS35214-50
64628B	3.000	1.880	2.940	3.000	0.250	0.250	MS24693BB30	MS35214-29

# Stainless Steel Clamps

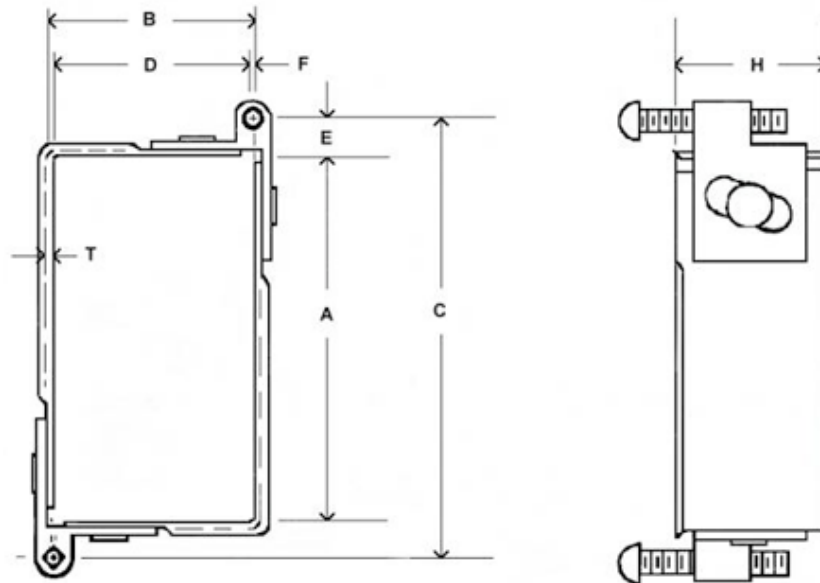


MSP Inc.P/N	OTHER P/N	A MAX.	B $\pm .010$	C $\pm .005$	D MAX.	D MIN.	E MAX.	T $\pm .003$	MOUNTING SCREW	ADJUSTING SCREW
64291		2.750	2.453	1.203	1.968	1.890	0.875	0.030	MS35214-44	9500-7
64341		2.015	1.750	0.843	1.280	1.230	0.875	0.018	MS24693BB52	9500-7
64463		3.600	3.300	1.625	1.968	1.890	0.875	0.030	MS24693BB52	9500-7
10300B		3.032	2.734	1.313	2.296	2.218	0.875	0.030	MS24693BB52	9500-7
9500C	MS28042-1	2.750	2.453	1.203	1.968	1.890	0.875	0.030	MS24693BB52	9500-7
9800B	MS28042-2	3.812	3.500	1.750	3.172	3.078	0.875	0.030	MS24693BB52	9800-7
9850A	MS28042-3	2.047	1.830	0.915	1.540	1.460	0.875	0.030	MS24693BB30	9850-7
9850S		2.015	1.750	0.875	1.319	1.241	0.875	0.030	MS24693BB62	9500-8
9850SF		2.015	1.750	0.875	1.319	1.241	0.875	0.030	MS24693BB52	9500-7
9950A	MS28042-4	1.563	1.330	0.665	1.040	0.960	0.875	0.018	MS24693BB30	9850-7



MSP Inc. P/N	MOTHER P/N	MA MAX.	MB ±.005	MC ±.005	MD MAX.	MD MIN.	ME ±.010	MOUNTING SCREW	MADJUSTING SCREW
10200B		2.750	2.453	1.203	1.968	1.890	1.057	MS24693B52	9500-7
10400B		3.032	2.734	1.313	2.296	2.218	1.288	MS24693BB52	9800-7
10100B		3.812	3.500	1.750	3.172	3.078	1.901	MS24693BB52	9800-7

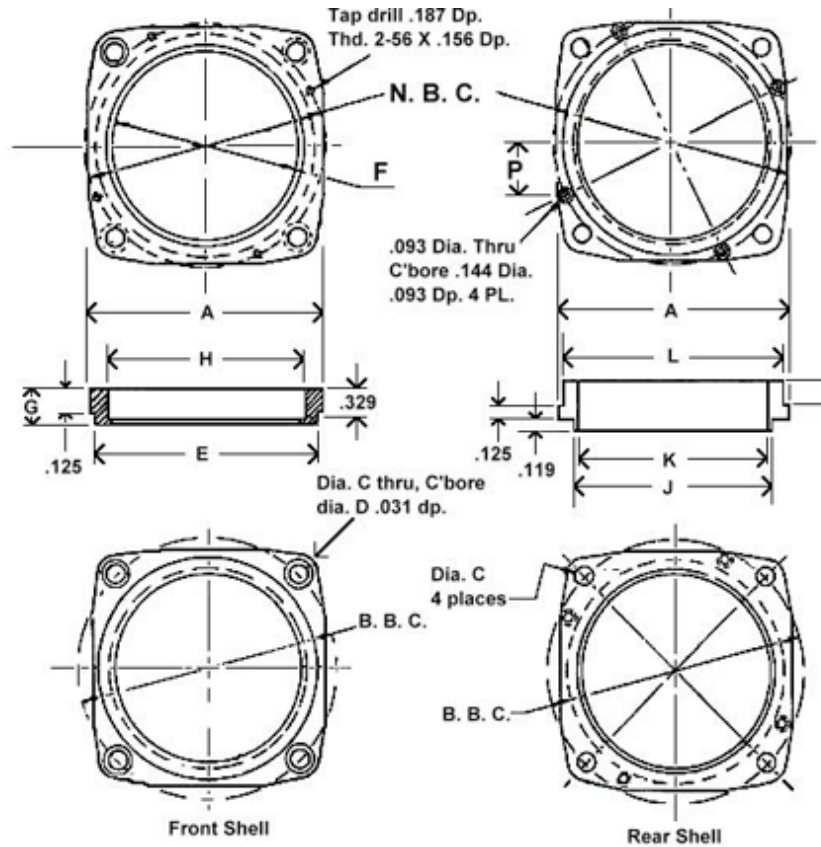
## Rectangular Clamps with Square Corners



MSP Inc. P/N	CLAMP SIZE	A ±.010	B ±.010	C ±.005	D ±.005	E ±.010	F REF.	ADJUSTING SCREW
--------------	------------	---------	---------	---------	---------	---------	--------	-----------------

4313	1" X 1/2"	0.500	1.000	1.000	0.960	0.250	0.030	AN515B6R16
4314	3-1/2" X1-3/8"	3.500	1.380	4.000	1.320	0.250	0.030	AN515B6R16
4315	3-1/2" X 1"	3.500	1.000	4.000	0.920	0.250	0.030	AN515B6R16
4316	2-1/2" X 1-3/8"	2.500	1.380	3.000	1.320	0.250	0.030	AN515B6R16
4317	2-1/2" X 1"	2.500	1.000	3.000	0.920	0.250	0.030	AN515B6R16
4318	1-1/2" X1-3/8"	1.500	1.380	2.000	1.320	0.250	0.030	AN515B6R16
4319	1-1/2" X 1"	1.500	1.000	2.000	0.920	0.250	0.030	AN515B6R16
4385	4.80 X 1.06	4.800	1.060	5.320	1.012	0.260	0.024	AN515B6R12
4398	1.000 X2.100	1.000	2.100	1.440	1.900	-0.100	-0.220	AN515B6R12
4594	1.380 X 1.500	1.380	1.500	1.630	-0.250	-0.040	-0.040	MS35214-31
4619	1.880 X 3.000	1.880	2.940	2.380	3.000			MS35214-29

## MS28055 Instrument Mounting Flanges



MSP Inc.  
P/N

OTHER P/N >A >B >C >D >E >F >G >H >J >K >L >M >N  
±.015 ±.003 ±.002 ±.006 ±.010 ±.006 ±.010 ±.002 ±.002 ±.003 ±.004 ±.006 ±.003 :

MS28055-4	6099-4	1.735	1.855	0.149	0.237	1.490	1.438	0.505	1.580					1.724
MS28055-5	6099-5	1.735	1.855	0.149						1.575	1.513			1.724
MS28055-6	6100-6	2.375	2.625	0.170	0.281	2.245	1.875	0.375	2.017					2.437
MS28055-7	6100-7	2.375	2.625	0.170						2.012	1.951	2.250	0.255	2.437

AN5809-2	9600-2	2.375	2.625	0.170	0.281	2.245	1.875	0.375	2.107		2.437			
AN5809-3	9600-3	2.375	2.625	0.170						2.102	1.951	2.250	0.255	2.437
MS28055-8		3.250	3.500	0.170	0.281	3.125	2.969	0.375	3.247					3.365
MS28055-9		3.250	3.500	0.170										3.365
9700-2		3.250	3.500	0.170		3.125	2.969	0.375	3.240					3.365
9700-3		3.250	3.500	0.170						3.134				3.365

AN5809-1 CONSISTS OF: (1) 5809-2,  
(1) AN5809-3, ASSEMBLY &  
MOUNTING HARDWARE

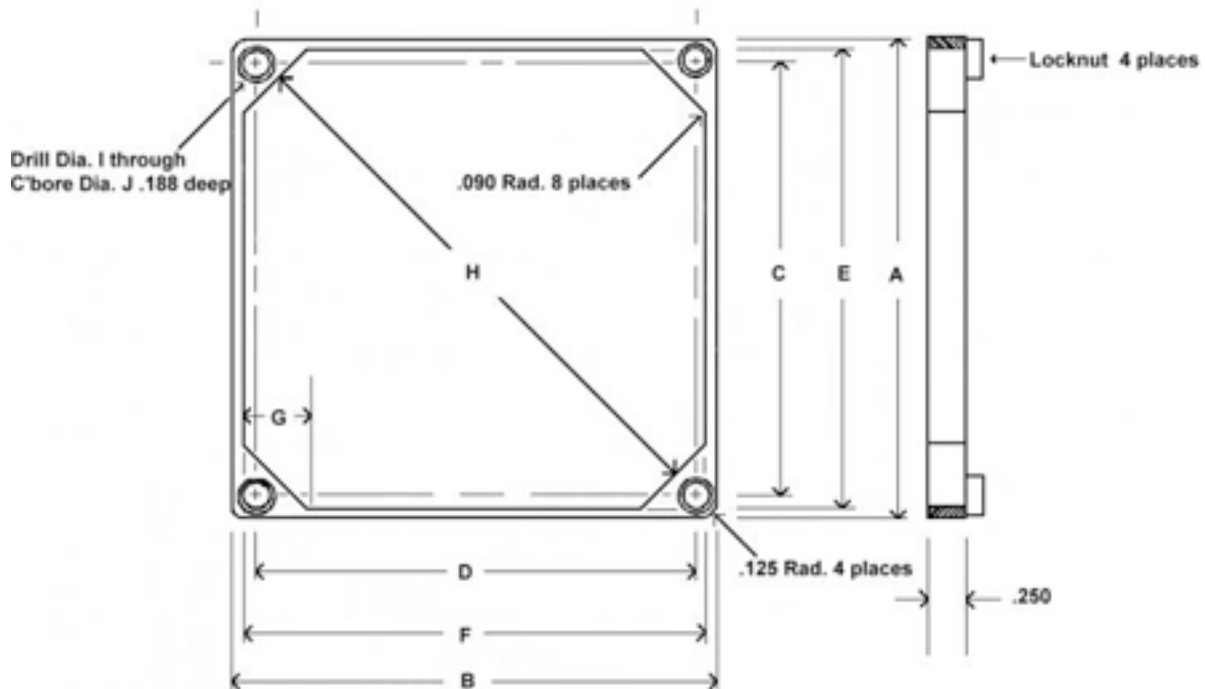
9700-1 CONSISTS OF: (1) 9700-2,  
(1) 9700-3,  
ASSEMBLY HARDWARE

3055-10 CONSISTS OF: (1) MS28055-4, (1)  
MS28055-5, ASSEMBLY &  
MOUNTING HARDWARE

28055-11 CONSISTS OF: (1) MS28055-6,  
(1) MS28055-7, ASSEMBLY &  
MOUNTING HARDWARE

28055-12 CONSISTS OF: (1) MS28055-8,  
(1) MS28055-9, ASSEMBLY &  
MOUNTING HARDWARE

## ARINC 408A Mooring Plates



<b>MSP Inc. P/N</b>	<b>OTHER P/N</b>	<b>A ±.010</b>	<b>B ±.010</b>	<b>C ±.005</b>	<b>D ±.005</b>	<b>E ±.010</b>	<b>F ±.00</b>	<b>G ±.010</b>	<b>H REF.</b>	<b>I ±.001</b>	<b>J ±.003</b>	<b>THREAD SIZE</b>
68010-1	1X2ATI-R	1.158	2.375	0.863	2.080	1.000	2.210	0.420	1.676	0.188	0.250	6-32 UNC-2B
68010-2	1.5X3ATI-R	1.657	3.375	1.340	3.060	1.500	3.210	0.442	2.705	0.188	0.250	6-32 UNC-2B
68010-3	1.5X4ATI-R	1.657	4.175	1.340	3.860	1.510	4.010	0.442	3.271	0.188	0.250	6-32 UNC-2B
68010-4	2ATI-S	2.375	2.375	2.080	2.080	2.210	2.210	0.417	2.535	0.188	0.250	6-32 UNC-2B
68010-5	2X4ATI-R	2.375	4.175	2.080	3.860	2.210	4.010	0.436	3.781	0.188	0.250	6-32 UNC-2B
68010-6	3ATI-S	3.375	3.375	3.060	3.060	3.210	3.210	0.438	3.920	0.188	0.250	6-32 UNC-2B
68010-7	3X4ATI-R	3.375	4.175	3.060	3.860	3.210	4.010	0.438	4.486	0.188	0.250	6-32 UNC-2B
68010-8	4ATI-S	4.175	4.175	3.860	3.860	4.010	4.010	0.439	5.050	0.188	0.250	6-32 UNC-2B
68010-9	4X5ATI-R	4.175	5.175	3.860	4.810	4.010	5.010	0.487	5.690	0.203	0.281	8-32UNC-2B
68010-10	5ATI-S	5.175	5.175	4.810	4.810	5.010	5.010	0.488	6.395	0.203	0.281	8-32UNC-2B
68010-11	5X6ATI-R	5.175	6.175	4.810	5.810	5.010	6.010	0.522	7.054	0.228	0.281	10-32UNF-2B
68010-12	6ATI-S	6.750	6.175	5.810	5.810	6.010	6.010	0.523	7.760	0.228	0.281	10-32UNF-2B